



Environment and sustainability solutions

Sustainable solutions that optimize environmental protection, economic prosperity, social justice, and cultural vibrancy.

HATCH



Your challenges, our solutions

Environment and Social Governance “ESG” and Climate Change are some of the toughest challenges facing our clients.

It's clear that climate change is largely caused by human activity and that it negatively affects natural ecosystems, economic returns, and community development. The resolution of this complex global problem will require multiple simultaneous strategies.

We are passionately committed to the development of a future shaped by a sustainable global society. We recognize that climate change is largely caused by human activity and hinders this vision by negatively affecting natural ecosystems, economic returns, and community development. The resolution of this complex global problem will require multiple simultaneous strategies.

We can help.

As “entrepreneurs with a technical soul” actively participating in the metals, energy, and infrastructure sectors, Hatch is uniquely positioned, and obligated, to affect positive change on this issue as it is amongst the toughest challenges of our era.

Environment and sustainability

We provide integrated environmental and sustainability services throughout the project life cycle for metals and mining, infrastructure, and energy projects. These services include:

- Environmental, economic, and social sustainability solutions
- Indigenous engagement and community and construction management
- Environmental and social impact assessment
- Earth, physical, and biophysical sciences
- Environmental due diligence
- Climate change awareness and mitigation
- Roadmap for sustainable economic and social growth
- Environmental management plans

From theory to active practice, we identify tangible actions, benefits, and efficiencies to drive real change for the full engagement life cycle.

Your partner along the roadmap to success

With a comprehensive toolkit, workshops, 3-D and GIS modeling, or re-imagination planning scenarios, we find synergies between client needs, host community capacity, and site constraints. The result is a roadmap for sustainable economic and social growth for affected communities, our clients, and the environment.

By applying seven generation thinking, we can strengthen our commitment to the economic evolution of communities. We can nurture long-term relationships. And we can make planning decisions that allow us to operate and live in our project communities with integrity.



Essential services, sound strategies

Through collaborating with our clients to create planning, engineering, and construction solutions that will adapt to climate change and meet ongoing performance measures with resilient designs, we can thrive on meeting the challenges that groundbreaking innovative projects present.

Sustainability (ESG)

- Climate change
- Vulnerability assessment
- Corporate governance
- Advisory and compliance

Environmental and social assessment

- Lifecycle assessment
- Regulatory framework and critical issue review
- Geospatial and drone services
- Options analysis (constraints, opportunity mapping and siting or route selections)

Compliance and permitting

- Air, noise, and vibration
- GHG emissions inventory and reduction planning
- Noise
- Environmental and social management plans and mitigation
- Environmental design criteria
- Auditing and inspection
- Waste management

Environmental and social due diligence

- Community engagement and social performance
- Indigenous, community, and regulatory engagement
- Economic and physical resettlement
- Stakeholder mapping and engagement

Site assessment and remediation

- Hydrogeology/geology and hydrology
- Soils characterization
- Site assessment
- Contamination management
- Contaminated sediments
- Hazardous waste
- Excess soils management

Natural capital

- Ecosystem, aquatics, and terrestrial resources
- Specialist studies (species at risk, eDNA)
- Wetlands
- Habitat reclamation/restoration
- Erosion and sediment control

We work with our clients to develop innovative, sustainable solutions that create long-lasting value. By joining forces to maximize our efforts, we can protect natural and economic resources even as we cope with aging assets and unprecedented climate conditions.

A step ahead

Effectively managing our own and our clients' ESG values are a critical aspect of social relevance. We are constantly evaluating and re-evaluating our environmental and social considerations in a collaborative manner, so they not only meet minimum expectations and comply with applicable regulations but also incorporate best practices as sustainable cornerstones.

Risk management approach

We efficiently collaborate with a risk management framework in mind, providing critical issues review and strategies addressing our combined ESG values in consideration of your risk tolerance and governance structure. This includes evaluation tools and teams of multidisciplinary experts drawn from our experienced global team of professionals across Hatch.

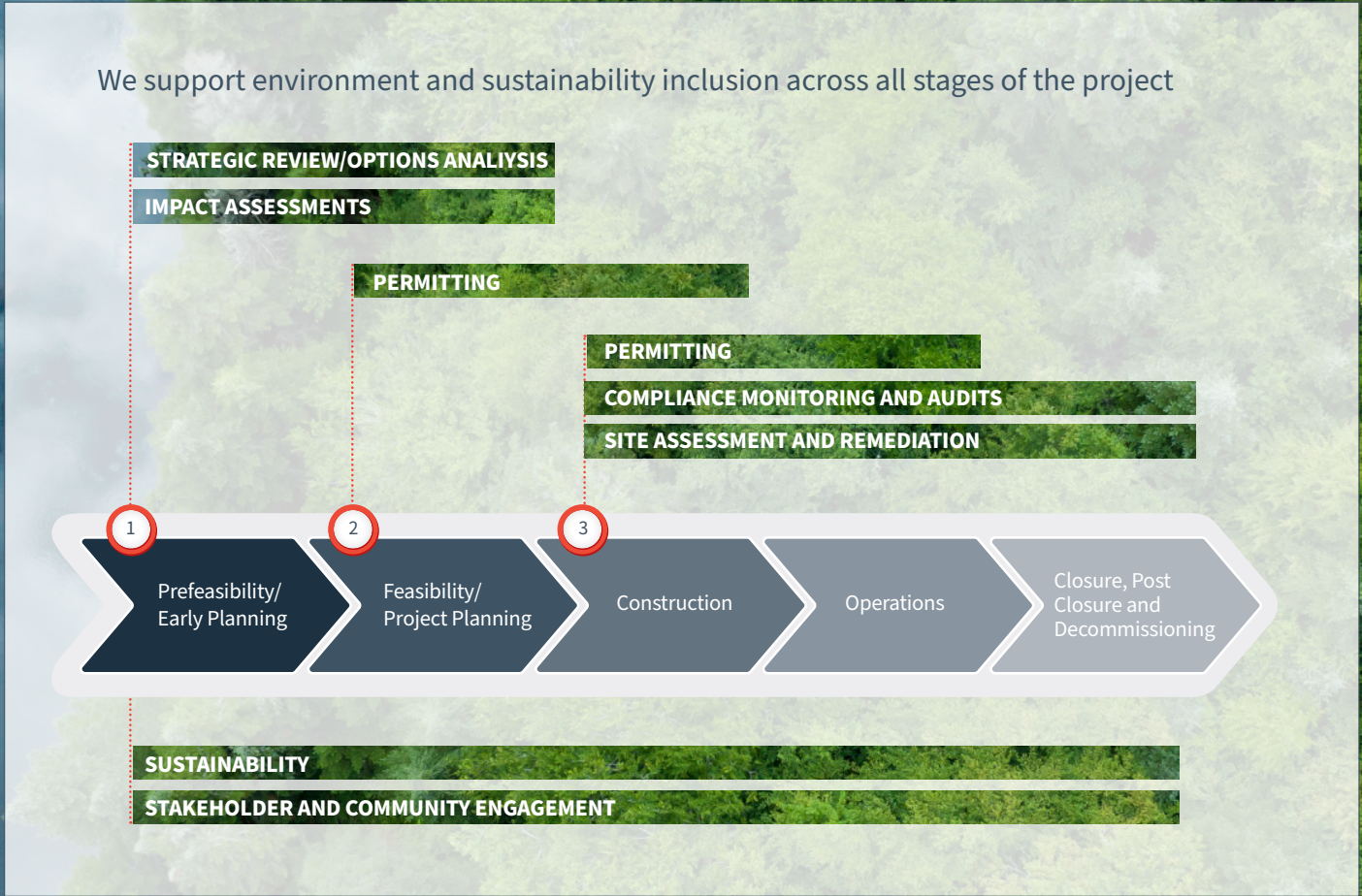
Environmental and social impact assessment (ESIA)

At the core of our strategy is an integrated and holistic approach to planning that drives responsible business investment and social performance by ensuring environmental and social needs are considered throughout the

engineering design and execution process. To ensure 'fit for purpose' ESIA and permitting outcomes, our global team of government relations and regulatory analysts, biologists, and technical and social subject matter experts will blend international best practices with local knowledge, expertise, and relationships.

Project design and execution

Regardless of the scale of your project, from brownfield expansion to greenfield remote sites, or first-of-its-kind giga-scale projects crossing multiple jurisdictions, Hatch customizes our strategic regulatory approach to suit your needs. Our philosophy of 'mitigation by design' emphasizes our belief that triple bottom line outcomes (social, environmental, and economic) are not only attainable, but a pre-requisite to building a sustainable future.



Environmental and social due diligence

Whatever the scale, wherever the location, due diligence provides an early opportunity to benchmark the environmental and social performance of a project against national standards and best international practice.

It's a short-term exercise toward achieving long-term financial and environmental gain.

The early identification of social and environmental risks and opportunities has been proven to contribute to sustainable development and plays an important role in decision-making and financial transactions. To provide a comprehensive view of the risk profile, we employ a robust method with an investigative focus.

Our team has considerable experience in delivering due diligence projects; each project utilizes a combination of international and local expertise that allows for integration of international best practice with an understanding of local requirements and conditions. We work with clients worldwide to provide tailored due diligence services that include:

- Review of international and national environmental and social performance requirements
- Independent review of existing project studies, surveys, and models to identify gaps and shortcomings
- Management of processes
- Engagement with external and internal stakeholders
- Development of action plans to address environmental and social issues and risks
- Development of management plans for construction, operation, closure, decommissioning, and care and maintenance phases
- Expertise in geospatial data analysis and graphic design to ensure that data presentation is readily accessible.

Climate change and sustainability

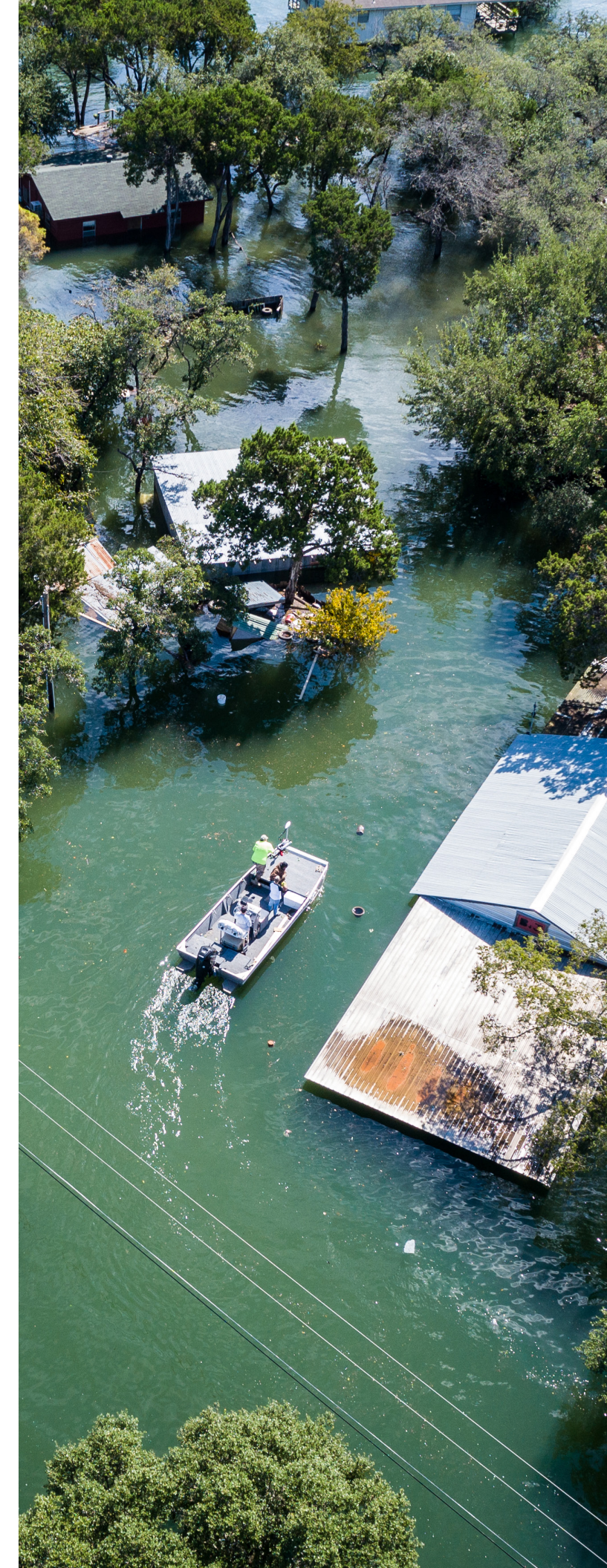
At the core of all the work we do is our strong belief in the value of helping our clients identify and mitigate their climate change risks.

As “entrepreneurs with a technical soul” actively participating in the metals, energy and infrastructure sectors, Hatch is uniquely positioned, and obligated, to affect positive change on this issue as it is amongst the toughest challenges of our era.

United Nations Global Compact CoP Commitment

Hatch releases inaugural United Nations Global Compact (UNGC) Communication on Progress (CoP) Report, highlighting our commitment to the UN's Sustainable Development Goals (SDGs) in our pursuit of a better world through positive change.

Using our exceptional and diverse teams, we apply our vast technical and business knowledge to designing and building practical, safe, and innovative solutions to combat climate change. We take a scientific, evidence-based approach to develop solutions in our pursuit of achieving net-zero and adapting our environments for climate change impacts.



Global presence, local focus

It has never been more important for businesses to work collaboratively with their host communities and truly engage the people who live in them. A successful project needs to do more than deliver its intended business purpose; it must wholeheartedly embrace the mantra of leaving the community better and stronger.

With a comprehensive toolkit and applied experiences, we find opportunities between the needs of the project and the capacity of the host community. The result is a roadmap for sustainable socioeconomic growth and development for communities, our clients, and their stakeholders. Ultimately, the goal is to leave a positive legacy in the community—one greater than the project itself.

We drive smarter, more inclusive development from concept to completion in four community engagement and social performance areas, including:

Social value and risk assessment

We map all the relevant stakeholders and provide a risk ranking and capacity assessment to participate in project activity, including workforce development, partnership models, and social procurement.

Local benefits planning

Project participation is one of the best ways to provide opportunities and value to community members living near your project area. It all starts with an in-depth understanding of the local workforce and businesses in the region, matched with the available project opportunities.

Indigenous and community led projects

Indigenous communities are actively planning, designing, and developing infrastructure projects for their members. We act as the intersection between community engagement and design in which community visions, goals, and aspirations are transformed into reality through culturally appropriate and community-led capital execution projects.



Our environment, our social impact

Construction is usually the first site-based project activity with the potential to cause significant negative environmental and social impacts. This is why an effective Construction Environmental Management Plan (CEMP) should be fully integrated into the construction management plans and procedures.

Hatch drafts CEMPs in order to:

- Link objectives and actions to the relevant construction team and activity
- Keep communities informed of progress and future activities
- Build social capital by creating opportunities and strong relationships with affected communities
- Mitigate environmental impacts
- Assure ‘duty of care’
- Develop a management system that is responsive to results and incorporates learning into improvements
- Promote effective communication so that everyone understands the purpose of the CEMP and their roles in its implementation
- Reduce risk and achieve compliance with the conditions of all environmental approvals and permits.

Our management process follows the plan – do – check – act cycle. We work with clients, contractors, and the community to identify benefit streams and link opportunities between the project and its surrounding environment and community.



About Hatch

Whatever our clients envision, our teams can design and build. With over six decades of business and technical experience in the mining, energy, and infrastructure sectors, we know your business and understand that your challenges are changing rapidly. We respond quickly with solutions that are smarter, more efficient and innovative. We draw upon our 9,000 staff with experience in over 150 countries to challenge the status quo and create positive change for our clients, our employees, and the communities we serve.

hatch.com



Scan the QR code to learn more about what our Environment & Sustainability team can do.



Please consider the environmental impact before printing this brochure. If you would like a printed copy, please reach out to us. We would be happy to send you one printed on 100% recycled paper.